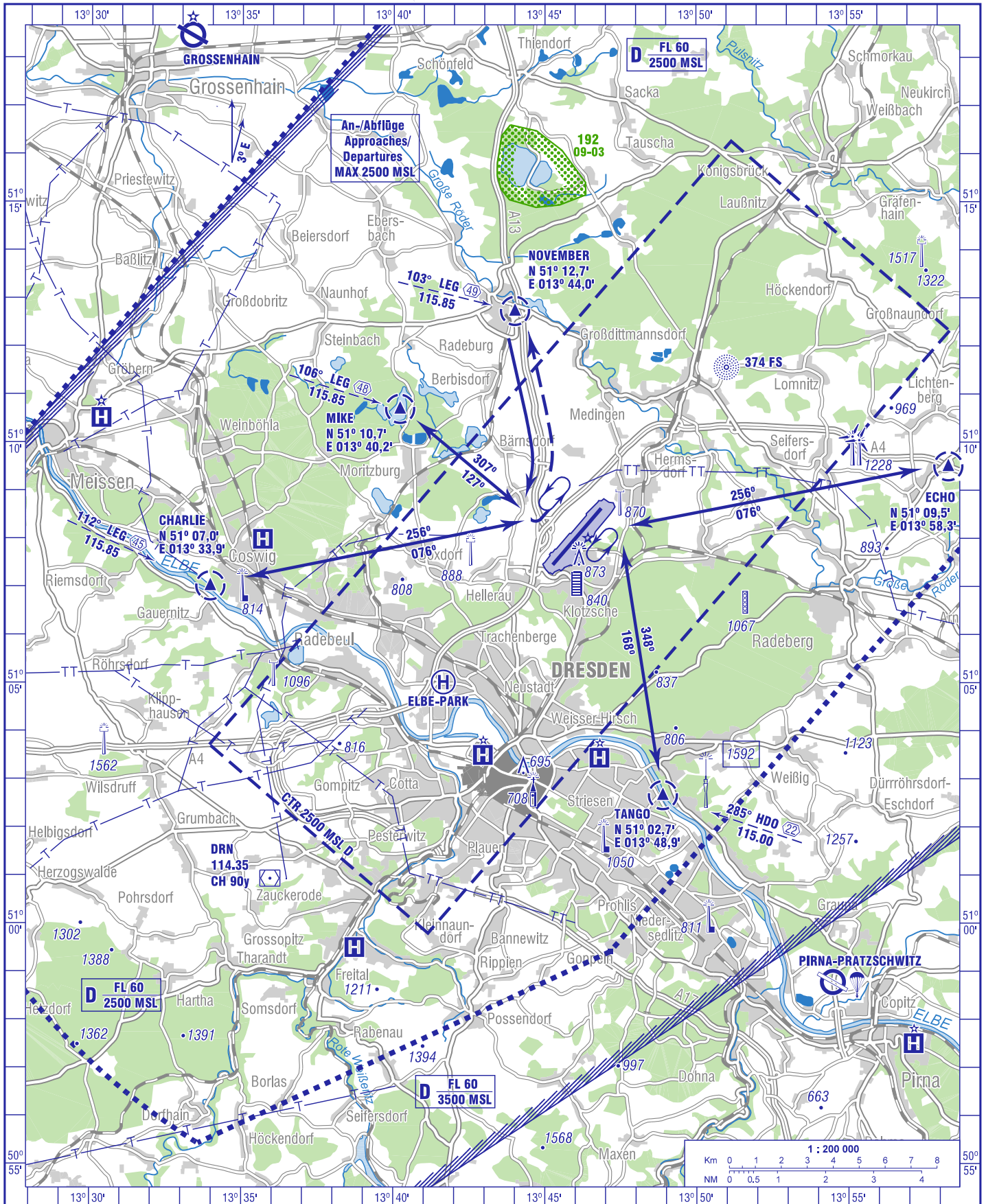


FIS DRESDEN ATIS 118.875  
MÜNCHEN INFORMATION ILS 04 110.50  
125.800 ILS 22 109.70

DRESDEN GROUND/ROLLK. 121.975 En/Ge  
DRESDEN APRON/VORFELD 121.750 En/Ge  
VDF O/R

DRESDEN TOWER/TURM 122.925 En/Ge  
119.700 En/Ge



Berichtigung: Hindernisse ABA  
Correction: Obstacles ABA.